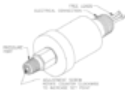


## CUSTOM CONTROL SENSORS, INC.



### GENERAL:

1. Observe all Warnings and Cautions contained on the attached Warning Sheet. See Warning Declaration and the OCS Catalog.
2. Follow all applicable federal, state government or industry codes and regulations, pertaining to the use of this device.

### MOUNTING:

1. Units may be directly mounted in any position at the source of the variable pressure element.

**WARNING:** BEWARE THAT BOTH PRESSURE AND ELECTRICAL CONNECTIONS TO THE UNIT ARE DEACTIVATED AND LOCKED OFF IN THE UNPRESSURIZED AND OPEN CIRCUIT CONDITION (ON-ALL, OFF-ALL) MODELS. DO NOT EXCEED MAXIMUM PRESSURE OR ELECTRICAL RATINGS.

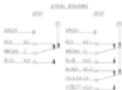
1. Units are supplied with male NPT port suitable for connection to NPT type brass/copper pipe with max. installation torque of 50 ft. lbs. OCS recommends use of either a grease or teflon tape. This will minimize excessive drain on the housing.

2. Pipe joint sealing compound is preferred over Teflon tape. However, either method of sealing is acceptable with proper care to avoid introducing sealing material into pressure ports or plumbing.

### ELECTRICAL CONNECTIONS:

1. Electrical connections are provided with a male conduit connection. Flexible conduit is recommended.

## 611 INSTALLATION INSTRUCTION



1. When making wire connections disconnect electrical power. Check for multiple circuits.
2. Make electrical connections in accordance with the NEC and all other applicable codes and regulations. Consider minimum wire size 12 AWG or 14 AWG, max. temp. applied. Plug as much wire as possible for a secure plug to facilitate removal, see wiring diagrams.
3. Proper grounding must be accomplished by connecting to the green wire provided.

**ADJUSTMENT:** (Not applicable if units are factory set) Pressure settings are internally adjustable from the pressure port side.

1. If the electrical circuit cannot be used for testing disconnect electrical power and use a suitable circuit tester or light fan.
2. Disconnect pipe nipples or NPT type threaded pipe from the pressure port. Use 1/2" hex. size Allen key screw to adjust pressure setting as described. Then attach to a suitable pressure source with a suitable gage and check that the circuit correctly operates at the pressures desired.
3. Decrease to decrease setting, start at adjusting the circuit.
4. Counter-clockwise to increase setting. Do not turn beyond flush with port.
5. For higher pressure port with 1/2" N. 1/8" max.
6. Reverse electrical circuit 1/2" N. 1/8" max.
7. Return power to unit.

### WARNING DECLARATION

This device is used to provide information or protection from a hazardous condition, it is not a substitute for an approved safety device or procedure. The user must follow all applicable codes, regulations, and standards. The manufacturer's responsibility for product safety ends at the time of shipment. The user must ensure that all safety devices are properly installed and maintained. The user must ensure that all safety devices are properly installed and maintained. The user must ensure that all safety devices are properly installed and maintained.