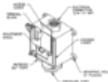


# CUSTOM CONTROL SENSORS, INC.

## 604 INSTALLATION INSTRUCTION



### General

a. Observe all Warnings and Cautions contained on the attached Warning Label, the Warning Declaration and the COE Casing.

b. Follow all applicable Governmental or other Codes or Regulations such as, but not limited to NEC, IMB, OMA and OMB.

### Mounting

a. Units may be mounted in any position. On a flat surface using 18 mounting holes provided and 1/8" screws at least 1/2" long.

**Warning:** Release all pressure prior to installation or removal of this device. Do not exceed maximum rated proof pressure.

a. Units are supplied with female NPT pipe stubs for connection to MPT pipe using an NPT tape threaded pipe. COE recommends use of either a union or flexible fitting. This will eliminate excessive strain on the housing.

b. Pipe joint coating, compound or primer over Teflon tape. However, either method of coating is acceptable with proper care to avoid introducing costly material into pressure switch or plating.

### Electrical Connections

**WARNING:** Do not make electrical connections while electrical power is ON.

a. Remove housing cover to allow access to the terminal block per illustration.

b. The electrical connection is provided with a 24 MPT female conduit connection. Flexible conduit is recommended. Conduit should be housing.

c. Make electrical connections in accordance with the NEC and all other applicable codes and regulations, see wiring diagram.

**Note:** Circuit coding is provided on instruction label inside housing.

d. When making wire connections disconnect electrical power. Check for multiple circuits.

e. Grounding: Proper grounding must be accomplished by use of green terminal screw provided.

**Adjustment:** (Not applicable if unit is factory set). Pressure settings are externally adjustable.

a. If the electrical circuit cannot be used for testing disconnect electrical power and use a suitable circuit tester or light bulb.

b. Loosen access cover. Adjust wheel as follows:

- Clockwise to increase settings.
- Counterclockwise to decrease settings.

c. Re-tighten access cover.

d. Reconnect electrical circuit.

e. Return power to unit.

## WARNING DECLARATION

This device is used to monitor equipment or processes that could present a hazard against the operation unless it is tested continuously. It is not intended to be used as a substitute for safety systems, regulations and standards. The manufacturer is not responsible for any damage or injury caused by misuse of this device. It is intended for use only under the conditions specified on the label. Custom Control Sensors, Inc. is not liable for any damage, death, disability or litigation of any application of the product. Service for quality assurance only.